

# Events & Logistics Fulfillment Capabilities

**End-to-end delivery from artwork and print to  
deployment & post-installation reporting**

# Content

**Why  
RUWAD?  
Value Proposition**

**Project Methodology**

**Event Activation Process**

**Capabilities Overview**

**Warehousing & Logistics**

**Proof of  
Work  
Technology &  
Tracking**

# Why RUWAD?

- 10+ years of industry experience
- Ruwad is a full-service events and brand activation partner.
- We bridge creative, production, and field execution for flawless delivery.
- Trusted by enterprises and agencies for time-critical, multi-site rollouts.



# Our End-to-End Value Proposition



## Single partner accountability

- One SLA from concept to post-install sign-off
- Centralized project ownership and escalation

## Speed & scale

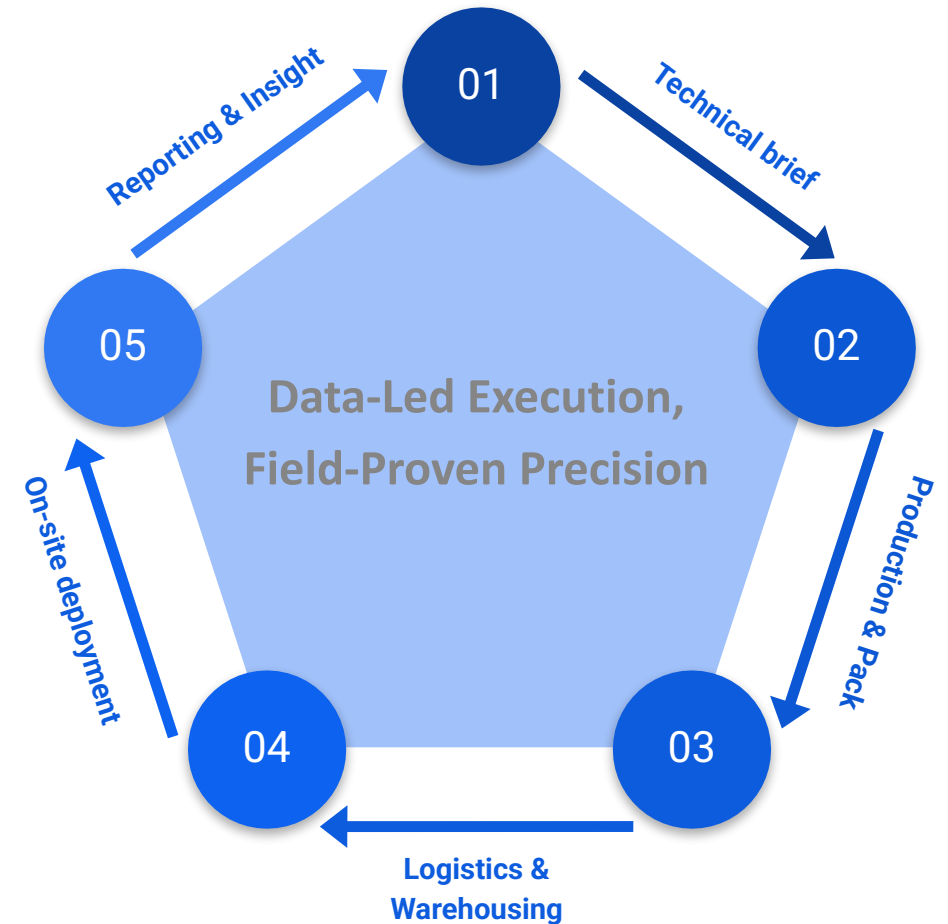
- Rapid artwork adaptation and print turnarounds
- Nationwide deployment teams and partner network

## Quality by design

- Pre-flight checks, color management, test fits
- Digital proofing and on-site QA with photo logs

## Transparent tracking

- Live production boards and logistics tracking
- Post-installation reports with geo-tagged photos



# Capabilities Overview



- Artwork & Creative Adaptation
- Pre-press, Color Management & Proofing
- Large-format & Specialty Printing (vinyl, fabric, rigid substrates)
- Finishing & Fabrication (cutting, lamination, mounting)
- Kitting, Packaging & Warehousing
- Transport & Site Logistics
- On-site Deployment & Installation
- Post-Installation QA & Reporting



# Artwork & Creative

## What We Do

- Artworking, resizing, and localization
- Pre-flight checks and file repair
- 3D mockups & site visualizations
- Template libraries & brand guardianship

## Why It Matters

- Right-first-time files reduce reprints
- Faster approvals via clear proofing
- Consistency across venues & formats





# Print & Production

## Capabilities

- Large-format inkjet (eco-solvent/UV/latex)
- Dye-sublimation fabric graphics
- Direct-to-substrate (foamboard, acrylic, aluminum)
- CNC cutting & laser finishing
- Color calibration & material profiling

## Outputs

- Banners, backdrops, wall & floor vinyls
- Wayfinding, POSM, exhibition panels
- Vehicle wraps & outdoor signage
- Custom fixtures and branded props



# Logistics & Warehousing



## Operations

- Kitting & labeling per site
- Pick/pack with barcode tracking
- Climate-aware storage for sensitive media
- Route planning and timed deliveries

## Assurance

- Chain-of-custody records
- Damage-proof packaging standards
- Real-time status updates





# On-site Deployment & Installation

## Field Teams

- Certified installers and riggers
- HSE-compliant methods of access
- Night/rapid turnaround crews
- Multi-site coordination

## On-Site Controls

- Method statements & risk assessments
- Test fits and surface prep
- Snag lists closed before handover



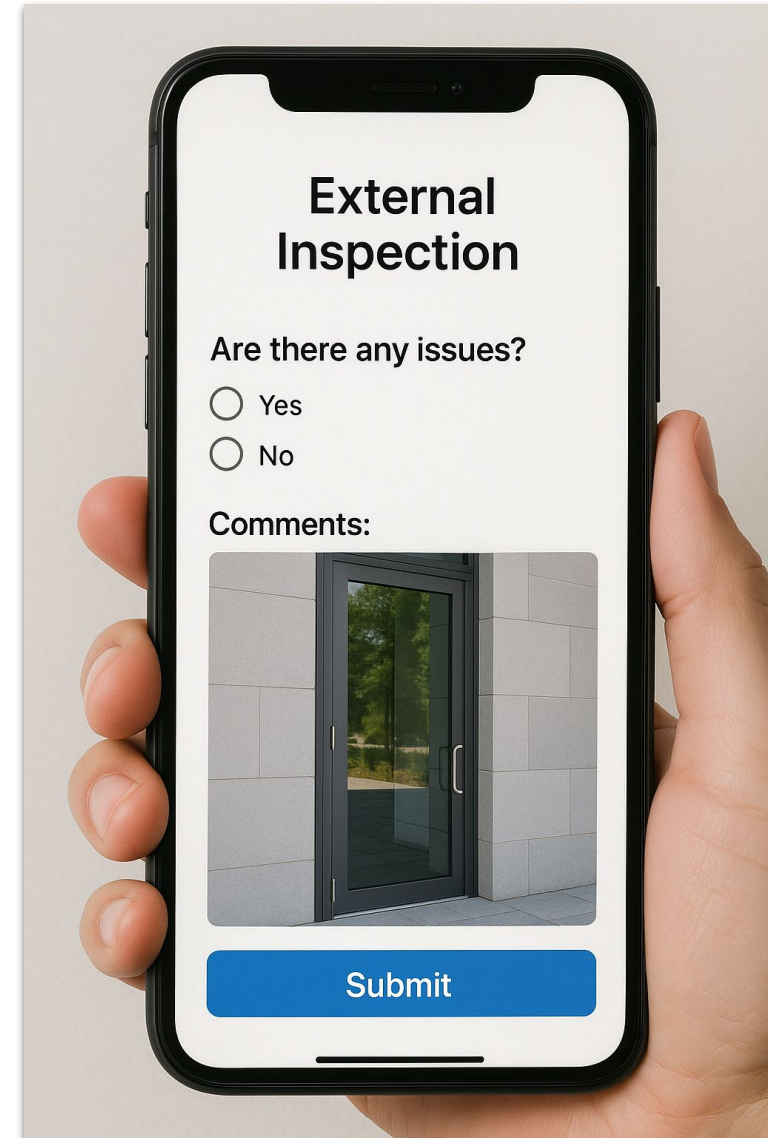
# Post-Installation & Reporting

## What You Receive

- Geo-tagged photo documentation
- Time-stamped install logs
- Punch-list resolution record
- Asset registry for re-orders

## Business Impact

- Proof of performance for stakeholders
- Data to optimize future rollouts



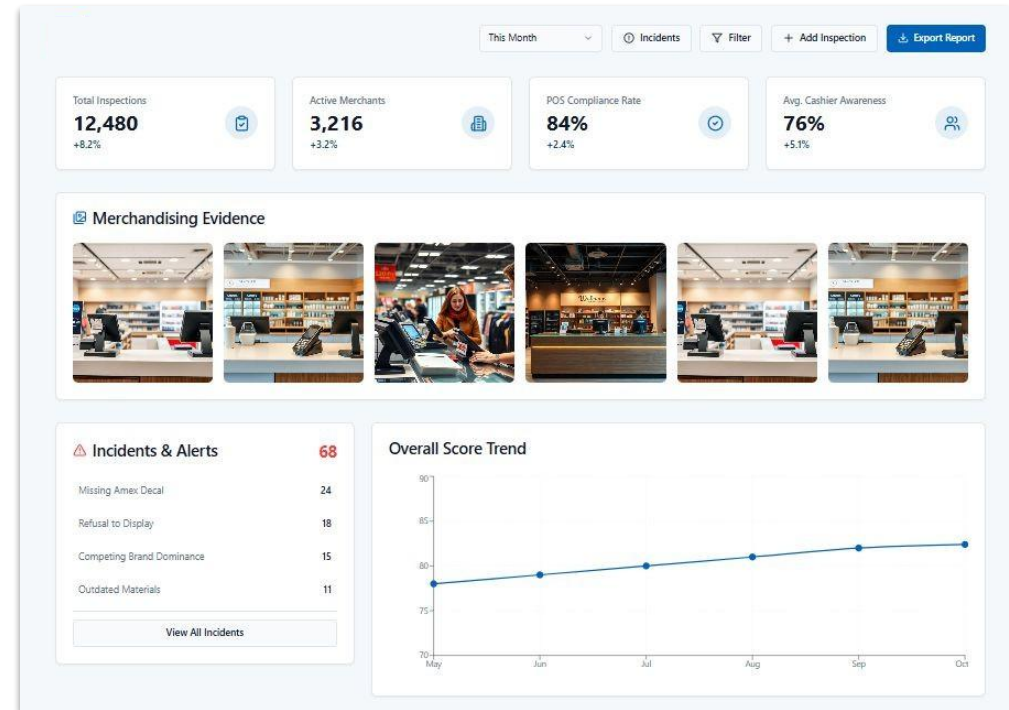
# Technology & Tracking

## Coverage

- Nationwide coverage via mixed in-house & certified partners
- Scalable teams for peak seasons and rapid activations
- Weekend and night installs available

## Proof of Work

- Production dashboards with job status
- Barcode/QR asset tracking
- Photo-based field reporting app



# Let us get in touch today!



**Call us:**

+966 55 361 9809

**Email us:**

[sales@ruwadsystems.com](mailto:sales@ruwadsystems.com)

**Visit us:**

<https://ruwadsystems.com/>

